

COMMERCIAL INSPECTION FLOW CHARTS

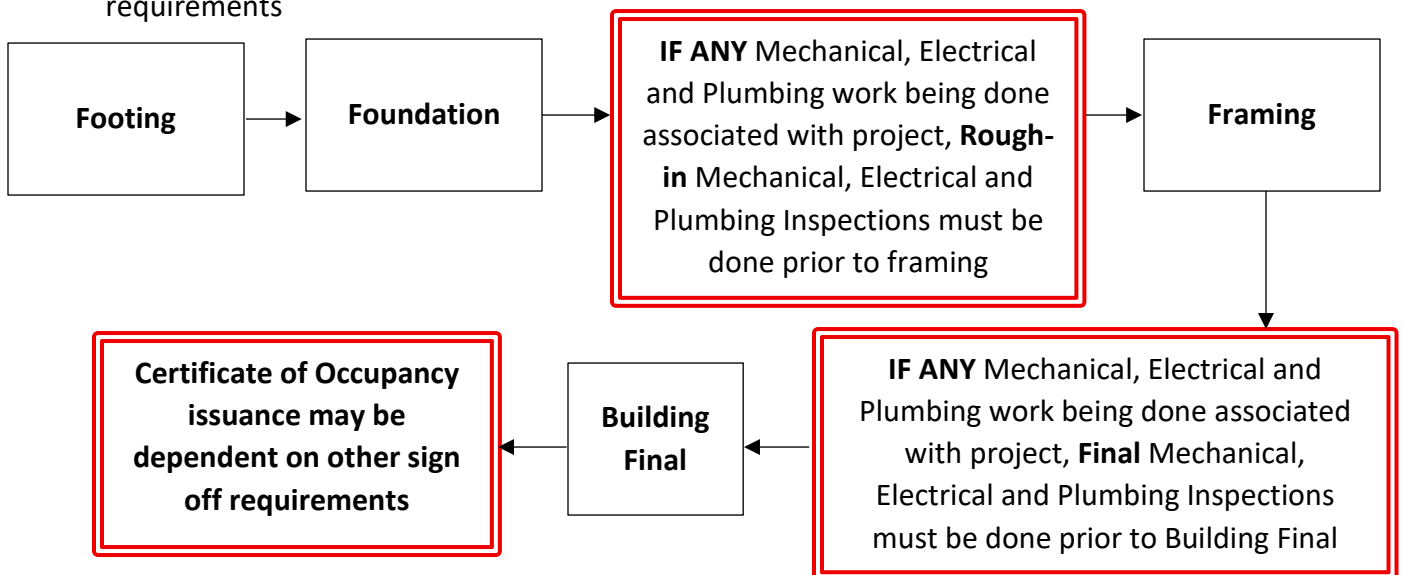
1. Commercial Permits Requiring a Building Pre-Construction Meeting

Flow charts for commercial permit types that require a Building Pre-Construction Meeting can be found in the [Building Pre-Construction Meeting Information document](#) on the City's website. These permit types are:

- Commercial Addition (C-ADD)
- Commercial Garage (C-GAR)
- Commercial Multi-Family (C-MULTI)
- Commercial New (C-NEW)
- Commercial Shell (C-SHELL)

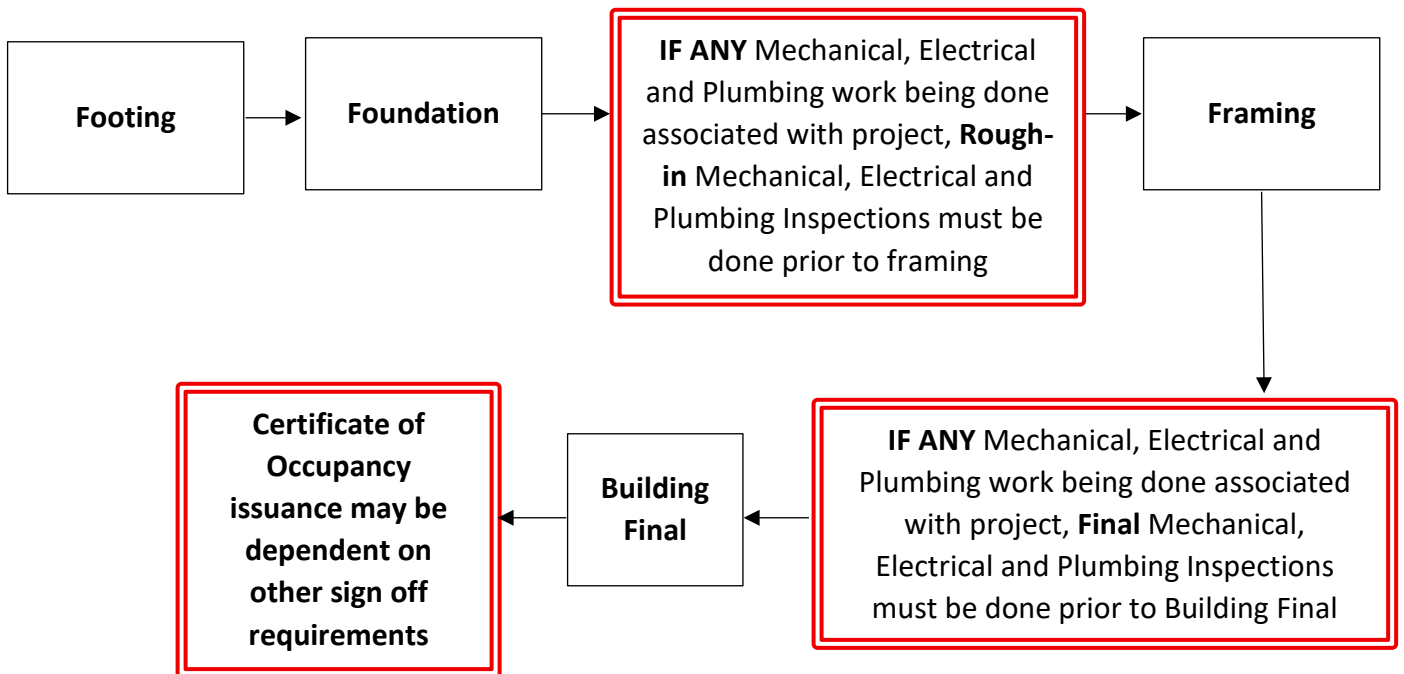
2. COMMERCIAL MISCELLANEOUS (C-MISC) INSPECTION FLOW CHART (2/17/2026)

1. Footing
2. Foundation
 - If any Mechanical, Electrical and Plumbing work being done associated with project, **Rough-in** Mechanical, Electrical and Plumbing inspections must be done prior to framing
3. Framing
 - If any Mechanical, Electrical and Plumbing work being done associated with project, **Final** Mechanical, Electrical and Plumbing inspections must be done prior to Building Final
4. Building Final
 - If project results in a Certificate of Occupancy, issuance may be dependent on other sign off requirements



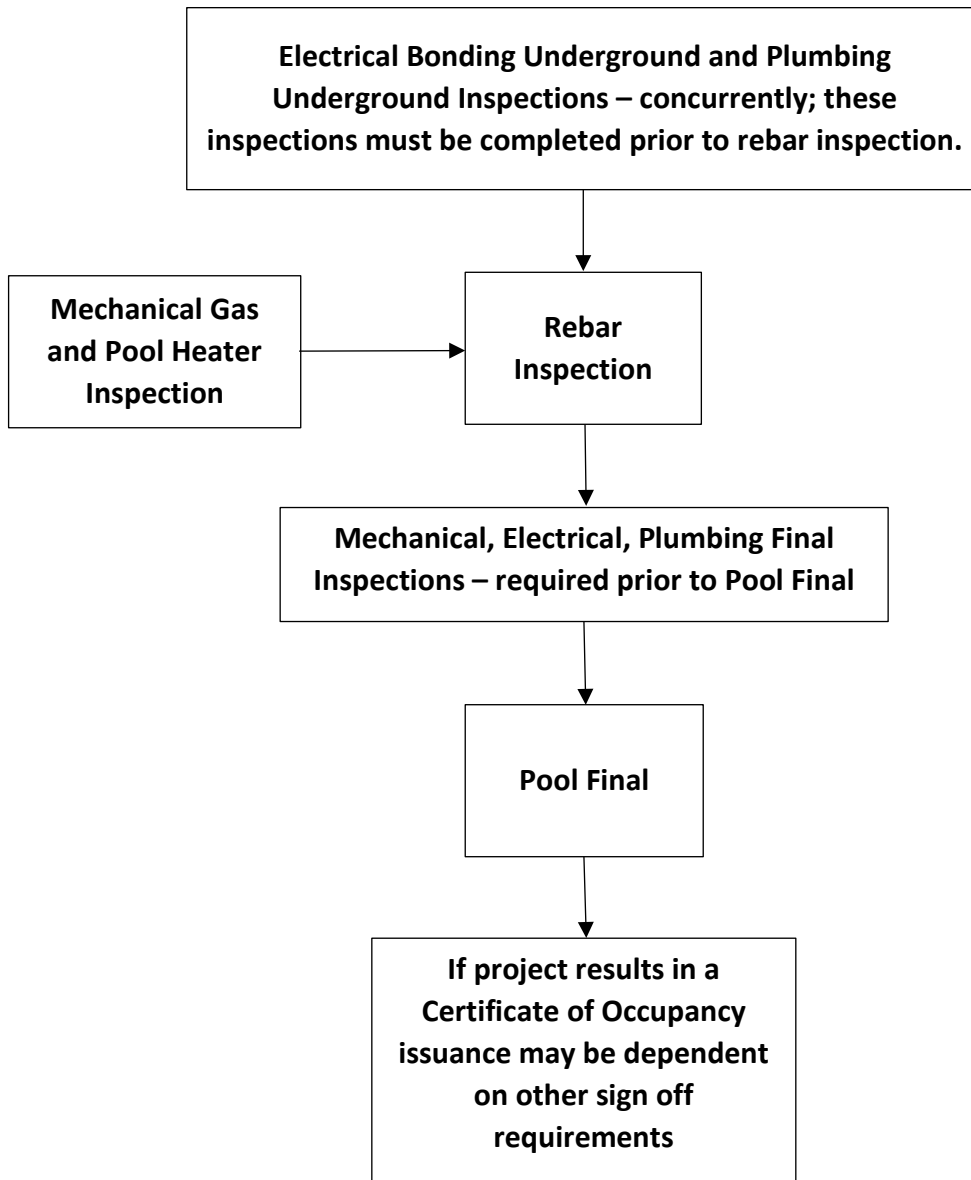
3. COMMERCIAL PATIO COVER (C-PATIO) INSPECTION FLOW CHART (2/17/2026)

1. Footing
2. Foundation
 - If any Mechanical, Electrical and Plumbing work being done associated with project, **Rough-in** Mechanical, Electrical and Plumbing inspections must be done prior to framing
3. Framing
 - If any Mechanical, Electrical and Plumbing work being done associated with project, **Final** Mechanical, Electrical and Plumbing inspections must be done prior to Building Final
4. Building Final
 - If project results in a Certificate of Occupancy, issuance may be dependent on other sign off requirements



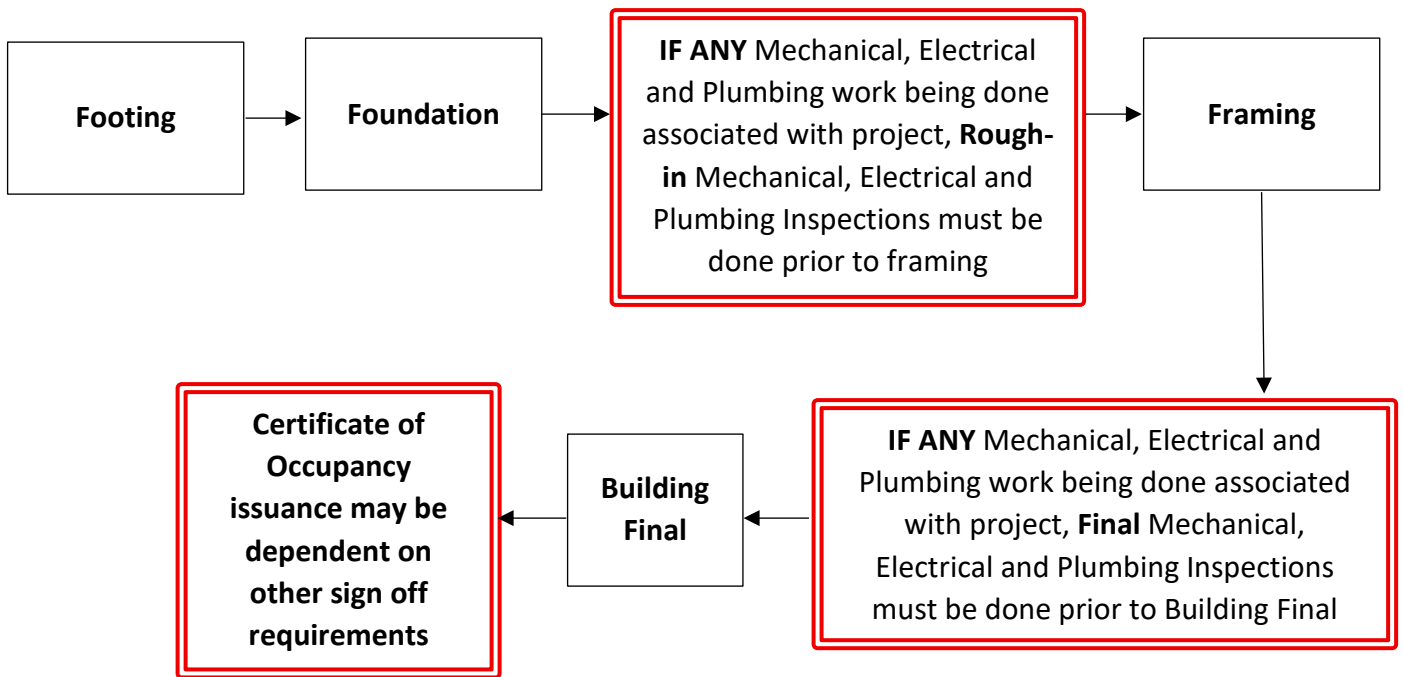
4. COMMERCIAL POOL (C-POOL) INSPECTION FLOW CHART (2/17/2026)

1. Electrical Bonding Underground and Plumbing Underground Inspections – Concurrently; these inspections must be completed prior to rebar and inspection
2. Rebar Inspection
 - Mechanical Gas and Pool Heater Inspection
3. Mechanical, Electrical and Plumbing Final Inspections – required prior to Pool Final
4. Pool Final
 - If project results in a Certificate of Occupancy, issuance may be dependent on other sign off requirements



5. COMMERCIAL SHED (C-SHED) INSPECTION FLOW CHART (2/17/2026)

1. Footing
2. Foundation
 - If any Mechanical, Electrical and Plumbing work being done associated with project, **Rough-in** Mechanical, Electrical and Plumbing inspections must be done prior to framing
3. Framing
 - If any Mechanical, Electrical and Plumbing work being done associated with project, **Final** Mechanical, Electrical and Plumbing inspections must be done prior to Building Final
4. Building Final
 - If project results in a Certificate of Occupancy, issuance may be dependent on other sign off requirements



6. COMMERCIAL TENANT IMPROVEMENT (C-TI) INSPECTION FLOW CHART (2/17/2026)

1. Slab Inspection (New) Rebar and Vapor Barrier
2. Energy Inspection of roof insulation
 - Rough-in Mechanical, Electrical and Plumbing Inspections must be done prior to framing
3. Framing
4. Energy Inspection of walls
 - Firewall (when applicable)
5. Ceiling Grid
 - Final Mechanical, Electrical and Plumbing Inspections must be done prior to Building Final
6. Building Final
 - Certificate of Occupancy issuance may be dependent on other sign off requirements

